



OSHA INSTRUCTION

U.S. DEPARTMENT OF LABOR

Occupational Safety and Health Administration

DIRECTIVE NUMBER: CPL 02-00-140

EFFECTIVE DATE: 6/23/2006

SUBJECT: Complaint Policies and Procedures

ABSTRACT

- Purpose:** This instruction revises complaint policies and procedures, and includes instructions for handling complaints received electronically from OSHA's public webpage.
- Scope:** This instruction applies OSHA-wide.
- References:** See paragraph III.
- Cancellations:** OSHA Instruction CPL 02-00-115 (2.115), Complaint Policies and Procedures; OSHA Instruction CPL 02-00-103 (2.103), Chapter 1, paragraph C1 through C4, C6 through C8 and C10; Memorandum dated July 13, 1999 from Deputy Assistant Secretary R. Davis Layne to the Regional Administrators and State Plan Designees entitled Child Labor: Responding to Complaints Alleging Hazards to Workers Under 18 Years of Age.
- State Plan Impact:** State intent required; see paragraph V.
- Action Office:** National, Regional Area Offices and State Plan Offices.
- Originating Office:** Directorate of Enforcement Programs.

Contact: Directorate of Enforcement Programs
200 Constitution Avenue, NW, Room N3119
Washington, DC 20210
(202) 693-2100

By and Under the Authority of

Edwin G. Foulke, Jr.
Assistant Secretary

Executive Summary

This instruction provides comprehensive guidance for handling complaints relating to workplace safety and health conditions. It defines critical terms relevant to the complaint process, including complaint, formal complaint, and referral, and outlines the conditions a complaint or referral must meet in order to warrant an on-site inspection. This instruction discusses protocol for dealing with electronic complaints, which are becoming a more common method of filing complaints with the Agency, and introduces an electronic code to facilitate tracking of these complaints. Procedures for receiving information via telephone, as well as for handling complaints filed in multiple area offices, are addressed. Additionally, detailed procedures for conducting both on-site inspections and phone/fax inquiries are delineated.

Significant Changes

- The distinction between formal and non-formal complaints has been reestablished.
- The terms *complaint* and *referral* have been redefined so as to be mutually exclusive of one another.
- The term *investigation* has been replaced with *inquiry*.
- The policy has been revised to clarify that classifying information received as a “complaint” or a “referral” does not in itself determine whether an inspection will be conducted as a result. Rather, an inspection is triggered based on the gravity and likelihood of the potential workplace hazard.
- Procedures for handling complaints submitted via OSHA’s public website are outlined.
- A provision has been added to establish that receipt of information giving reasonable grounds to believe that a worker under 18 years of age is exposed to a serious violation of a safety or health standard or a serious hazard will result in an inspection if the information relates to construction, manufacturing, or agriculture, or other industries as determined by the Area Director.

TABLE OF CONTENTS

I.	PURPOSE.....	1
II.	SCOPE.....	1
III.	REFERENCES.....	1
IV.	CANCELLATIONS.....	1
V.	STATE PLAN IMPACT.....	1
VI.	BACKGROUND.....	2
VII.	DEFINITIONS.....	2
	<i>A. Complaint</i>	2
	<i>B. Formal Complaint</i>	2
	<i>C. Non-formal Complaint</i>	3
	<i>D. Inspection</i>	3
	<i>E. Inquiry</i>	3
	<i>F. Electronic Complaint</i>	3
	<i>G. Permanently Disabling Injury or Illness</i>	3
	<i>H. Referral</i>	3
	<i>I. Representative of Employees</i>	4
VIII.	CRITERIA WARRANTING AN INSPECTION.....	4
IX.	ELECTRONIC COMPLAINTS RECEIVED VIA THE OSHA PUBLIC WEBSITE.....	6
X.	INFORMATION RECEIVED BY TELEPHONE.....	7
XI.	PROCEDURES FOR HANDLING COMPLAINTS FILED IN MULTIPLE AREA OFFICES OR REGIONS.....	8
XII.	PROCEDURES FOR AN INSPECTION.....	8

XIII. PROCEDURES FOR AN INQUIRY.	9
XIV. COMPLAINANT PROTECTION.....	11
XV. RECORDING IN IMIS.....	11
APPENDIX A	A-1
APPENDIX B	B-1

- I. Purpose. This instruction revises policies and procedures for handling complaints relating to workplace safety and health conditions, and includes procedures for handling complaints received electronically from the OSHA public website.
- II. Scope. This instruction applies OSHA-wide. States with OSHA-approved State Plans are encouraged to adopt similar policies but may choose to experiment with other alternatives. See paragraph V., below.
- III. References.
 - A. [OSHA Instruction 03-06 \(IRT 01\) \(03-06 \(ADM 01\)\)](#), The IMIS Enforcement Data Processing Manual: Table of Contents and Chapters 1 through 7.
 - B. [OSHA Instruction IRT 01-00-007 \(ADM 1-1.31\)](#), IMIS Enforcement Data Processing Manual for Use with the NCR Computer System.
 - C. [OSHA Instruction CPL 02-00-103 \(2.103\)](#), Field Inspection Reference Manual (FIRM).
 - D. [OSHA Instruction CPL 02-00-051 \(2-0.51J\)](#), Enforcement Exemptions and Limitations under the Appropriations Act.
 - E. [OSHA Instruction FAP 01-00-003 \(1.3\)](#), Federal Agency Safety and Health Programs.
 - F. [OSHA Instruction STP 01-00-002 \(2.22A\)](#), State Plan Policies and Procedures Manual.
 - G. Executive Order 12196, [Occupational Safety and Health Programs for Federal Employees](#), *Federal Register*, February 26, 1980 (45 FR 12769).
 - H. [Elements for Federal Employee Occupational Safety and Health Programs](#), 29 CFR1960.
 - I. Memorandum dated October 1, 1998 to Regional Administrators and State Plan Designees from Deputy Assistant Secretary Emzell Blanton, Jr. regarding Referrals in Exempt SIC Codes.
- IV. Cancellations.
 - A. OSHA Instruction CPL 02-00-115 (2.115), Complaint Policies and Procedures.
 - B. OSHA Instruction CPL 02-00-103 (2.103), Field Inspection Reference Manual (FIRM), Chapter 1, paragraphs C1 through C4, C6 through C8, and C10.
 - C. Memorandum dated July 13, 1999 from Deputy Assistant Secretary R. Davis Layne to the Regional Administrators and State Plan Designees entitled Child Labor: Responding to Complaints Alleging Hazards to Workers Under 18Years of Age.
- V. State Plan Impact. This instruction describes a Federal program change. States are expected to have enforcement policies and procedures in place which are at least as

effective as those in this instruction. These inspection policies must be accessible to all interested parties on the State Plan's website or submitted to OSHA in electronic format for posting to OSHA's website. If posted on a State Plan's website, the link to the specific policy must be submitted to OSHA for posting to OSHA's website as well.

In addition, because of the significant nature of the policy changes contained in this instruction, notice of intent (to maintain the State's current procedures or adopt identical or revised procedures in response to this Instruction) is required.

With regard to complaints received electronically through OSHA's public webpage and referred to the State for response, States must continue to coordinate with their Regions to assure timely acceptance of such complaints and appropriate response.

- VI. Background. In 1996, OSHA revised its policy on complaints. The reworked policy eliminated the distinction between "formal" and "non-formal" complaints, and instead classified complaints as those that result in on-site inspections and those that result in investigations using telephone, fax, and similar means. However, this reclassification blurred the distinction between a complaint and a referral, leading to confusion as to how to handle various scenarios that may arise. This revision of the 1996 directive reestablishes the formal and non-formal complaint distinction, while further clarifying the difference between a complaint and a referral. The definitions of each are now mutually exclusive, and the steps that should be taken in response to each are clearly outlined.

Additionally, on July 13, 1999, OSHA issued a memorandum to provide more effective protection for minor workers (under 18 years of age), who are especially vulnerable to workplace hazards. The guidance provided in this memorandum is now incorporated in this instruction; see Paragraph VIII.A.9.

Furthermore, advances in technology now allow employees to review the rights, protections and opportunities available to them under the Occupational Safety and Health Act of 1970 (the Act) on the Internet. Complaints about safety and health hazards at the workplace can also be filed by workers via the Internet. This webpage for employees can be viewed at <http://www.osha.gov/as/opa/worker/index.html>, or is available through OSHA's public website at www.osha.gov. This instruction includes information for Federal offices and State Plan offices on how to handle these complaints received electronically.

These procedures continue to provide for quick resolution of complaints, speed hazard abatement and enable OSHA to focus its inspection resources on the workplaces where they are most needed. The policy continues to protect the right of current employees and their representatives to file complaints about workplace safety and health hazards.

VII. Definitions.

- A. *Complaint.* Notice of an alleged safety or health hazard (over which OSHA has jurisdiction), or a violation of the Act, submitted by a past or present employee or representative of employees.
- B. *Formal Complaint.* Complaint made by a current employee or a representative of employees that meets **all** of the following requirements:

1. Asserts that an imminent danger, a violation of the Act, or violation of an OSHA standards exposing employees to physical harm exists in the workplace;
 2. Is reduced to writing or submitted on an OSHA-7 form; and
 3. Is signed by at least one current employee or employee representative.
- C. *Non-formal Complaint.* Any complaint alleging safety or health violations that does not meet all of the requirements of a formal complaint identified above and does not come from one of the sources identified under *Referral* in VII.H. below.
- D. *Inspection.* An on-site examination of an employer's worksite conducted by an OSHA compliance officer, initiated as the result of a complaint or referral, and meeting **at least one** of the criteria identified in VIII.A (below).
- E. *Inquiry.* A process conducted in response to a complaint or a referral that does not meet one of the identified inspection criteria. It does not involve an on-site inspection of the workplace, but rather OSHA advises the employer of the alleged hazard(s) or violations by telephone, fax, e-mail, or by letter if necessary. The employer is required to provide a response, and the Agency will notify the complainant of that response via appropriate means.
- F. *Electronic Complaint.* A complaint submitted via OSHA's public webpage. All complaints submitted via OSHA's public webpage are considered non-formal.
- G. *Permanently Disabling Injury or Illness.* An injury or illness that has resulted in permanent disability or an illness that is chronic or irreversible. Permanently disabling injuries or illnesses include, but are not limited to: amputation, blindness, a standard threshold shift in hearing, lead or mercury poisoning, paralysis or third-degree burns.
- H. *Referral.* Information received from one of the sources listed below alleging a hazard or a violation of the Act believed to exist in a workplace.
1. **CSHO referral** – information based on the direct observation of a CSHO. (Code 14A as A. *CSHO (Within Office).*)
 2. **Safety and health agency referral** – from sources including, but not limited to: NIOSH, state programs, consultation, state or local health departments, local police and fire departments, medical doctors, as well as safety and/or health professionals in other Federal agencies. (As appropriate, code 14A as B. *Federal OSHA*; C. *State OSH*; F. *Consultation*; G. *State/Local Government*; or I. *Other.*)
 3. **11(c) complaint referral** – made by an 11(c) discrimination investigator when an employee alleges that he or she was discriminated against for complaining about safety or health conditions in the workplace or for refusing to do an allegedly imminently dangerous job or task. (Code 14A as D. *Discrimination.*)

4. **Other government agency referral** – made by other Federal, State, or local government agencies or their employees. (As appropriate, code 14A as *E. Other Federal Agency*, or *G. State/Local Government*.)
5. **Media report** – either news items reported in the media or information reported directly to OSHA by a media source. (Code 14A as *H. Media*.)
6. **Employer report** – of accidents other than fatalities and catastrophes. (Code 14A as *I. Other*.)

I. *Representative of Employees*. Any of the following:

1. An authorized representative of the employee bargaining unit, such as a certified or recognized labor organization.
2. An attorney acting for an employee.
3. Any other person acting in a bona fide representative capacity, including members of the clergy, social workers, spouses and other family members, and government officials or nonprofit groups and organizations acting upon specific complaints and injuries from individuals who are employees.
 - The representational capacity of the person filing complaints on behalf of another should be ascertained unless it is already clear. In general, the affected employee should have requested, or at least approved of, the filing of the complaint on his or her behalf.

VIII. Criteria Warranting an Inspection.

- A. Whether the information received is classified as a complaint or a referral, an inspection of a workplace is normally warranted if **at least one** of the conditions below is met (*but see XII.A.2*):
1. A valid formal complaint is submitted. Specifically, the complaint must be reduced to writing or submitted on an OSHA-7 form, be signed by a current employee or representative of employees, and state the reason for the inspection request with reasonable particularity. Additionally, there must be reasonable grounds to believe either that a violation of the Act or OSHA standard that exposes employees to physical harm exists, or that an imminent danger of death or serious injury exists, as provided in Section 8(f)(1) of the Act.
 2. The information alleges that a disabling injury or illness (as defined in VII.F., above) has occurred as a result of the complained of hazard(s), and there is reason to believe that the hazard or related hazards still exist.
 3. The information alleges that an imminent danger situation exists (see CPL 02-00-103 (2-0.103), the Field Inspection Reference Manual, for additional procedures to be followed).

4. The information concerns an establishment and an alleged hazard covered by a local, regional, or national emphasis program, the Site Specific Targeting Plan, or the Agency's current strategic plan.
5. The employer fails to provide an adequate response to an inquiry, or the individual who provided the original information provides further evidence that the employer's response is false or does not adequately address the hazard(s).
6. The establishment that is the subject of the information has a history of egregious, willful, failure-to-abate, or repeat citations within the Area Office's jurisdiction during the past three years, or is an establishment or related establishment in the Enhanced Enforcement Program. However, if the employer has previously submitted adequate abatement documentation for these violations demonstrating that they have been corrected and that programs have been implemented to prevent a recurrence of hazards, the Area Director will normally determine that an inspection is not necessary.
7. An 11(c) discrimination investigator or Regional Supervisory Investigator requests that an inspection be conducted in response to an employee's allegation that the employee was discriminated against for complaining about safety or health conditions in the workplace or for refusing to perform an allegedly imminently dangerous job or task.
8. If an inspection is scheduled or has begun at an establishment and a complaint or referral that would normally be handled via inquiry is received, that complaint or referral may, at the Area Director's discretion, be incorporated into the scheduled or ongoing inspection. If such a complaint is formal, the complainant must still receive a written response addressing the complaint items.
9. If the information gives reasonable grounds to believe that a worker under 18 years of age is exposed to a serious violation of a safety or health standard or a serious hazard, an on-site inspection will be initiated if the information relates to construction, manufacturing, agriculture, or other industries as determined by the Area Director. (Limitations placed on OSHA's activities in agriculture by Appropriations Act provisions will be observed. See OSHA Instruction CPL 02-00-051 (2-0.51J)).

NOTE: The information does not need to allege that a child labor law has been violated.

10. The information received is a signed, written complaint from a current employee or employee representative that alleges a recordkeeping deficiency that indicates the existence of a serious safety or health violation.
- B. In order to schedule an inspection of an employer in an exempt industry classification as specified by Appropriations Act provisions (see OSHA Instruction CPL 02-00-051 (2-051J)):
1. The information must come directly from a current employee; OR

2. It must be determined and documented in the case file that the information came from a representative of the employee (*see* VII.I.) with the employee's knowledge of the representative's intended action.

IX. Electronic Complaints Received via the OSHA Public Website.

- A. Electronic complaints submitted via the OSHA public website are automatically forwarded via e-mail to a designated Area Office in the appropriate state. That Office then forwards the electronic complaints to the appropriate Area Office in the state.
- B. Each Area Office manages a "Complaints" mailbox and processes electronic complaints according to internal complaint processing procedures. The complaints mailbox is monitored daily and every incoming complaint is reviewed for jurisdiction.
 1. If the complaint falls within the jurisdiction of the Area Office, the complaint is entered into IMIS and processed as usual.
 2. If the complaint falls within the jurisdiction of another Area Office, the complaint is forwarded appropriately.
- C. Area Offices will coordinate with State Plan states to establish how electronic complaints will be processed. After reaching agreement on the procedures for receiving electronic complaints, the State establishes its own internal procedures for responding to such complaints. These procedures may be the State's usual procedures for handling unsigned complaints or they may include some further coordination with the complainant prior to action. See also section V, above. In State Plan states, the Federal Monitoring office will screen the complaints unless other arrangements have been made. If the complaint falls within the individual State Plan's jurisdiction, the Screening Office will follow the procedures developed with the State Plan for processing the complaint.
- D. Complete an OSHA-7 form for all complaint information received. In order to facilitate the tracking of electronic complaints, enter the following code in the Optional Information field:

N-11-LOGXXXXXX

- Where N-11 indicates that the complaint was filed electronically; and
 - The digits following *LOG* are the unique compliant ID/log numbers assigned to the electronic complaint when processed by the Salt Lake Technical Center. The log number may vary and does not have to be exactly six digits. In entering the code, there is no space between the word LOG and the digits that follow.
- E. Information received electronically from a current employee is considered a non-formal complaint until that individual provides a signed copy of the information. The employee can send or fax a signed copy of the information, request that an OSHA-7 form be sent, or sign the information in person at the Area Office.

Normally a complainant is given five working days to formalize an electronic complaint. The Area Office must actively follow up on information received electronically in order to provide the employee with the opportunity to make the complaint formal.

- F. All complaint related material received electronically should be printed and date stamped with the date the material was submitted and received. When these dates are not the same, the Area Director will determine the appropriate date for the incoming material.

X. Information Received by Telephone.

- A. During the course of telephone contact with the caller, OSHA will attempt to obtain the following information:

1. Whether the caller is a current employee or an employee representative.
2. The exact nature of the alleged hazard(s) and the basis of the caller's knowledge, as the individual receiving the information must determine, to the extent possible, whether the information received describes an apparent violation of OSHA standards or the OSH Act.
3. The employer's name, address, telephone and fax numbers, as well as the name of a contact person at the worksite.
4. The name, address, telephone number, and e-mail address of any union and/or employee representative at the worksite.

- B. As appropriate, OSHA will provide the caller with the following information:

1. Describe the complaint process, and if appropriate, the concepts of "inquiry" and "inspection," as well as the relative advantages of each.
2. If the caller is a current employee or a representative of employees, explain the distinction between a formal complaint and a non-formal complaint, and the rights and protections that accompany filing a formal complaint. These rights and protections include:
 - The right to request an on-site inspection.
 - Notification in writing if an inspection is deemed unnecessary because there are no reasonable grounds to believe that a violation or danger exists.
 - The right to obtain review of a decision not to inspect by submitting a request for review in writing.
3. If appropriate, inform the complainant of rights to confidentiality in accordance with Section 8(f)(1) of the Act for private sector employees, and Executive Order 12196 dated February 26, 1980 for Federal employees, and ask whether the complainant wishes to exercise this right. When confidentiality is

requested, the identity of the complainant is protected regardless of the formality of the complaint.

4. Explain Section 11(c) rights to private sector employees and employees of the U.S. Postal Service, or reprisal and discrimination protection provided by Executive Order 12196, 29 CFR § 1960.46 and the Whistleblowers Protection Act of 1989 to Federal employees. (See OSHA Instruction FAP 01-00-003 for reports of reprisal or discrimination from Federal employees.)

XI. Procedures for Handling Complaints Filed in Multiple Area Offices or Regions.

- A. When a Regional Office determines that multiple offices within the Region have received the same complaint from an employee or an employee representative regarding a hazardous condition or a deficiency in an employer's safety and health program, or, if the Regional Office suspects the same complaint has been filed in multiple Regions, the Regional Office should contact the Director or Deputy Director of the Directorate of Enforcement Programs (DEP).
- B. DEP will query all 10 Regions and coordinate with the Directorate of Cooperative and State Programs to query the State Plan States in order to determine whether similar complaints have been filed in multiple offices.
 1. If multiple Regions have received the same complaint, the National Office will address the complaint with the employer.
 2. Area Offices should indicate in IMIS that these complaints have been transferred to the National Office. In field **45a.**, select *A. Federal OSHA*; in field **45b.**, select *00 – National Office*. The complaint should then be closed using field **48**.

XII. Procedures for an Inspection.

- A. Upon receipt of a complaint or referral, the Area Director (or his or her designee) will evaluate all available information and exercise professional judgment as to whether there are reasonable grounds to believe that a violation or hazard exists.
 1. If necessary, reasonable attempts will be made to contact the individual who provided the information in order to obtain additional details or to clarify issues raised in the complaint or referral. See Appendix B.
 2. The Area Director may determine not to inspect a facility if he or she has a substantial reason to believe that the condition complained of is being abated.
- B. Where a complaint has been submitted but, in the professional judgment of the Area Director, there are no reasonable grounds to believe that a violation or hazard exists, no inspection or inquiry will be conducted.
 1. Where a formal complaint has been submitted, the complainant will be notified in writing of OSHA's intent not to conduct an inspection, the reasoning behind the determination, and the appeal rights provided under 29 CFR 1903.12. The justification for not inspecting will be noted in the case file.

2. Where a non-formal complaint or referral has been submitted, if possible, the individual providing the information will be notified by appropriate means of OSHA's intent not to conduct an inquiry or inspection. The justification for not inspecting will be noted in the case file.
- C. If the information contained in the complaint or referral meets at least one of the inspection criteria listed in VIII.A. above, and there are reasonable grounds to believe that a violation or hazard exists, the Area Office is authorized to conduct an inspection.
1. If appropriate, the Area Office will inform the individual providing the information that an inspection will be scheduled and that he or she will be advised of the results.
 2. After the inspection, the Area Office will send the individual a letter addressing each information item, with reference to the citation(s) or a sufficiently detailed explanation for why a citation was not issued.
- D. If an inspection is warranted, it will be initiated as soon as resources permit. Inspections resulting from formal complaints of serious hazards will normally be initiated within five working days.

XIII. Procedures for an Inquiry.

- A. If the complaint or referral does not meet the criteria for initiating an on-site inspection, an inquiry will be conducted. OSHA will promptly contact the employer to notify it of the complaint or referral and its allegation(s).
- B. If a non-formal complaint is submitted that does not meet any of the inspection criteria, the complainant may be given five (5) working days to make the complaint formal.
1. The complainant may come into the Area Office and sign the complaint, or mail or fax a signed complaint letter to OSHA. Additionally, an OSHA-7 form can be mailed or faxed to the complainant, if appropriate.
 2. If the complaint is not made formal after five (5) working days, OSHA will proceed with the inquiry process.
- C. The employer will be advised of what information is needed to answer the inquiry and encouraged to respond by fax or e-mail. Employers are requested to do the following (for differing Federal Agency procedures, refer to FAP 01-00-003, Federal Agency Safety and Health Programs):
1. Immediately investigate and determine whether the complaint or referral information is valid and make any necessary corrections or modifications.
 2. Advise the Area Director either in writing or via e-mail within five (5) working days of the results of the investigation into the alleged complaint or referral information. Although the employer is requested to respond within the above

time frame, the employer may not be able to complete abatement action during that time, but is encouraged to do so.

3. Provide the Area Director with supporting documentation of the findings, including any applicable measurements or monitoring results, and photographs and/or videos that the employer believes would be helpful, as well as a description of any corrective action the employer has taken or is in the process of taking.
 4. Post a copy of the letter from OSHA where it is readily accessible for review by all employees.
 5. Return a copy of the signed Certificate of Posting to the Area Office.
 6. If there is a recognized employee union or safety and health committee in the facility, provide it with a copy of OSHA's letter and the employer's response.
- D. As soon as possible after contacting the employer, the notification letter will be faxed to the employer, or mailed where no fax is available. Sample letters to complainants and employers are provided on the NCR. Note that some of these letters are for private sector use and some are for Federal Agency use. If e-mail is an acceptable means of responding, this should be indicated in the notification letter and the proper e-mail address should be provided.
- E. If no employer response or an inadequate employer response is received after the allotted five working days, additional contact with the employer may be made before an inspection is scheduled. Ultimately, if the employer provides no response or an inadequate response, or if OSHA determines from other information that the condition has not been or is not being corrected, an inspection will be scheduled.
- F. The complainant will be advised of the employer's response, as well as his or her right to dispute that response, and of the right to request an inspection if the alleged hazard persists.
1. When OSHA receives an adequate response from the employer and the complainant does not dispute or object to the response, an on-site inspection normally will not be conducted.
 2. If the complainant is a current employee or a representative of employees and wishes to dispute the employer's response, the disagreement must be submitted in writing and signed, thereby making the complaint formal.
 - If the employee disagreement takes the form of a written and signed formal complaint, refer to procedures at XII, above.
 - If the employee disagreement does not take the form of a written and signed formal complaint, some discretion is allowed in situations where, in the professional judgment of the Area Director, the information does not warrant an on-site inspection. In such situations, the complainant will be

notified of OSHA's intent not to conduct an inspection and the reasoning behind the determination. This decision should be sufficiently documented in the case file.

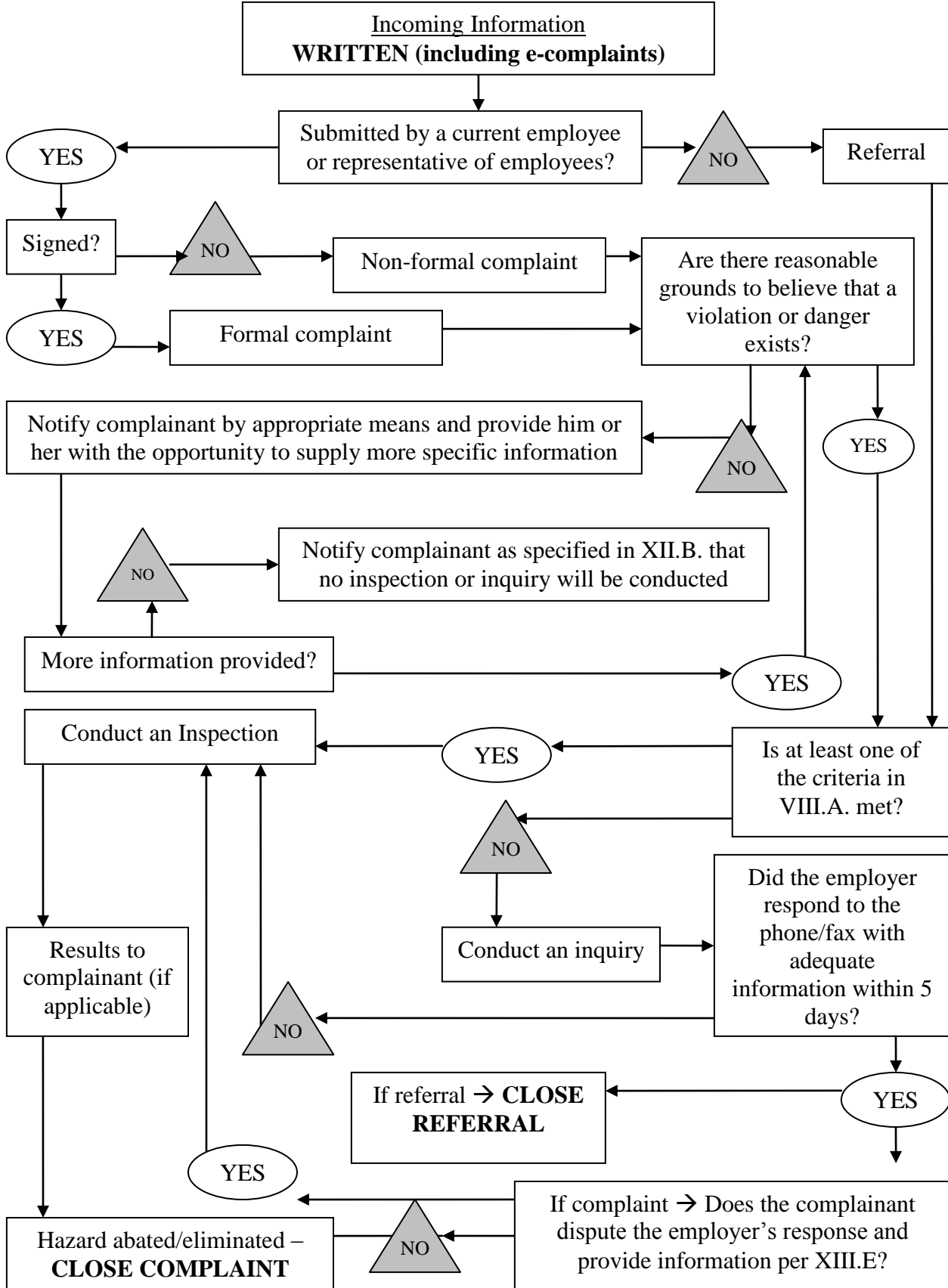
- G. If a signed complaint is received after the complaint inquiry process has begun, the Area Director will determine whether the alleged hazard is still likely to exist based on the employer's response and by contacting the complainant. The complainant will be informed that the inquiry has begun and that the complainant still retains the right to request an on-site inspection if he or she disputes the results and believes the hazard still exists.
- H. The complaint must not be closed until OSHA confirms that the hazard has been abated and eliminated.

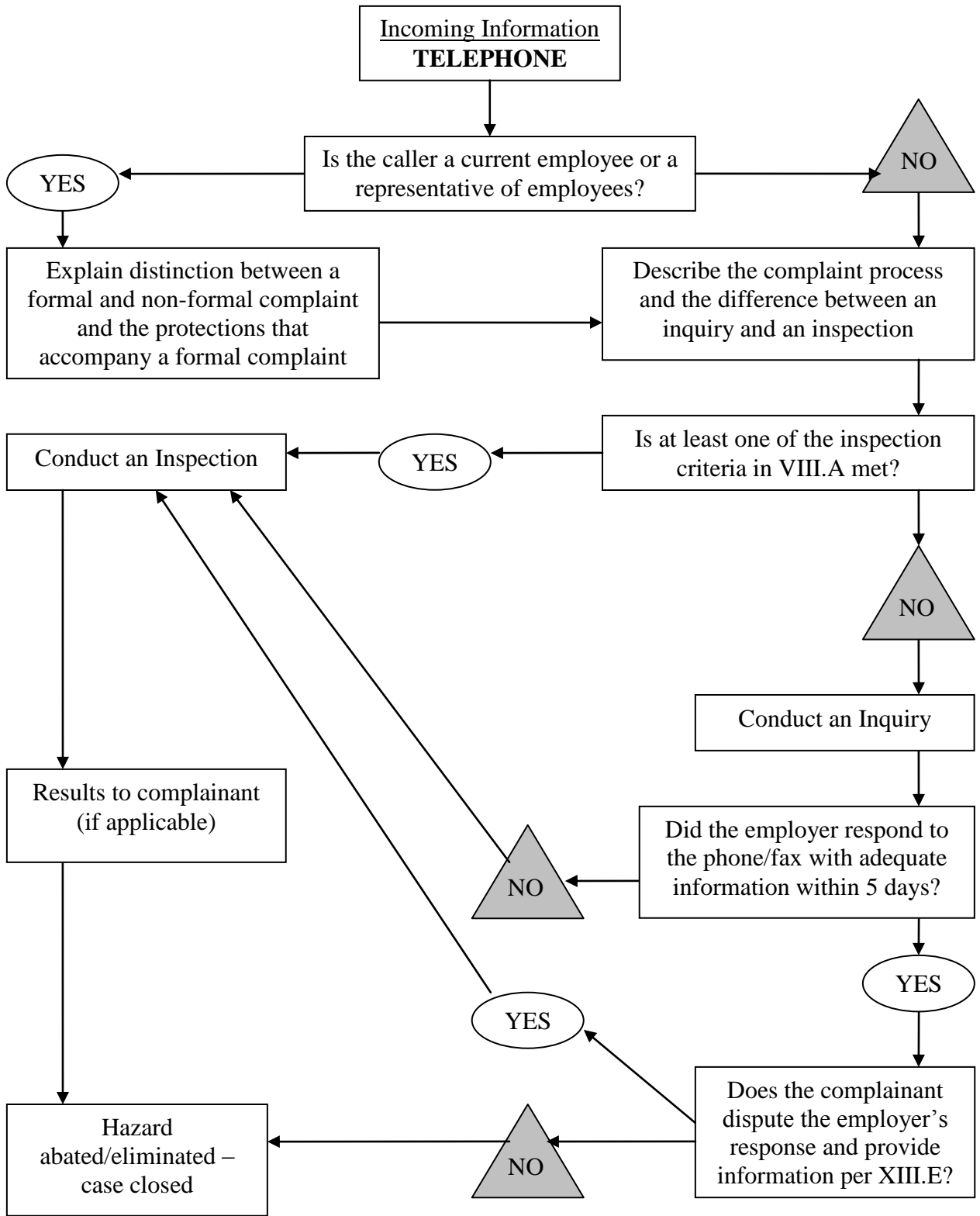
XIV. Complainant Protection.

- A. *Identity of the complainant.* Upon request of the complainant, his or her identity will be withheld from the employer in accordance with Section 8(f)(1) of the Act. No information will be given to the employer that would allow the employer to identify the complainant.
- B. *Discrimination Protection.*
 - 1. Section 11(c) of the Act provides protection for employees who believe that they have been the subject of an adverse employment action in retaliation for engaging in activities related to workplace safety and health. Any employee who believes that he or she has been discharged or otherwise discriminated against by any person as a result of engaging in such activities may file a discrimination complaint. Such a complaint **must** be filed within 30 days of the discharge or other discrimination.
 - 2. Complainants should always be advised of their 11(c) rights and protections upon initial contact with OSHA and whenever appropriate in subsequent communications.

- XV. Recording in IMIS. Information about complaint inspections or inquiries must be recorded in IMIS following current instructions given in the IMIS manual. Refer to OSHA Instruction 03-06 (IRT 01) (03-06 (ADM 01)), The IMIS Enforcement Data Processing Manual: Table of Contents and Chapters 1 through 7.

APPENDIX A





APPENDIX B
Complaint Questionnaire

Obtain information from the caller by asking the following questions, where relevant.

For All Complaints:

1. What is the hazard?

2. How are workers exposed to this hazard? Describe the unsafe or unhealthful working conditions; identify the location.

3. What work is done in the unsafe/unhealthful area? Identify, as well as possible, the type and condition of equipment in use, the materials (e.g., chemicals) being used, the process/operation involved, and the kinds of work being done near the hazardous area. Have there been any recent chemical spills, releases, or accidents?

4. With what frequency are workers doing the task that leads to the exposure? Continuously? Every day? Every week? Rarely? For how long at one time? How long has the condition existed (so far as can be determined)? Has it been brought to the employer's attention? Have any attempts been made to correct the condition, and, if so, who took these actions? What were the results?

5. How many shifts are there? What time do they start? On which shift does the hazardous condition exist?

6. What personal protective equipment (e.g., hearing protection, gloves or respirators) is required by the employer relevant to the alleged exposure? Is it used by employees? Include all PPE and describe it as specifically as possible. Include the manufacturer's name and any identifying numbers.

7. How many people work in the establishment? How many are exposed to the hazardous conditions? How near do they get to the hazard?

8. Is there an employee representative or a union in the establishment? Include the name, address, and telephone number of the union and/or the employee representative(s).

For Health Hazards

9. Has the employer administered any tests to determine employee exposure levels to the hazardous conditions or substance? Describe these tests. Can the employees get the results (as required by the standard)? What were the results?

10. What engineering controls are in place in the area(s) in which the exposed employees work? For instance, are there any fans or acoustical insulation in the area which may reduce exposure to the hazard?

11. What administrative or work practice controls has the employer put in place?

12. Do any employees have any symptoms that may have been caused by exposure to hazardous substances? Have any employees ever been treated by a physician for a work-related disease or condition? What was it?

13. Have there been any “near-miss” incidents?

14. Are respirators worn to protect against health hazards? If so, what kind? What exposures are they protecting against?

15. If the complaint is related to noise, what, if any, hearing protection is provided to and worn by the employees?

16. Do employees receive audiograms on a regular basis?

For Safety Hazards:

17. Under what adverse or hazardous conditions are employees required to work? This should include conditions contributing to stress and “other” probability factors.

18. Have any employees been injured as a result of this hazardous condition? Have there been any “near miss” incidents?
