

Heidi Drygas  
Commissioner

[www.labor.alaska.gov](http://www.labor.alaska.gov)



P.O. Box 111149  
Juneau, AK 99811-1149  
907.465.2700  
[commissioner.labor@alaska.gov](mailto:commissioner.labor@alaska.gov)

## Press Release

COMMISSIONER'S OFFICE

FOR IMMEDIATE RELEASE  
July 21, 2017

No. 17-32

For more information: **Karinne Wiebold, Economist**  
907-465-6039, [Karinne.Wiebold@Alaska.Gov](mailto:Karinne.Wiebold@Alaska.Gov)

### Unemployment Rate at 6.8 Percent in June

JUNEAU, Alaska—Alaska's seasonally adjusted unemployment rate was 6.8 percent in June, one-tenth of a percentage point higher than May. The comparable national rate was 4.4 percent.

June employment was down by an estimated 5,500 jobs, or 1.6 percent, compared to June 2016. The estimates suggest job losses are tapering somewhat. Over-the-year losses were as high as 9,000 in the fall of 2016, which equated to about 2.5 percent.

Health care, federal and local government, and leisure and hospitality were the only industries to gain jobs over the year. State government led employment losses (-1,500), followed by construction (-1,400), and oil and gas (-1,300 jobs).

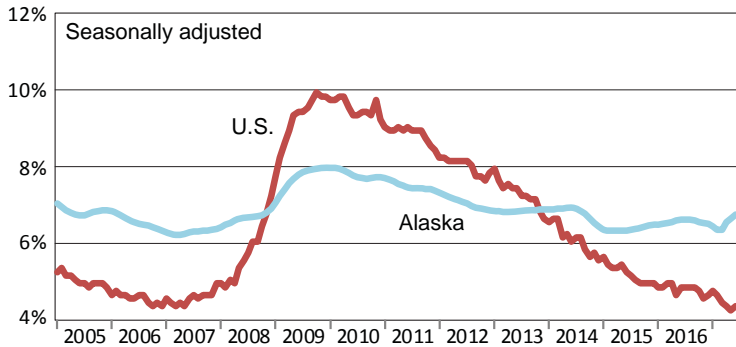
June's not-seasonally adjusted unemployment rate was 7.0 percent, up two-tenths of a percentage point from May. While a summer increase in the rate may seem counterintuitive, June's unemployment rate is frequently up slightly from May because the end of the school year brings an influx of entrants into the labor force, not all of whom find work right away.

Across the state, unemployment rates fell in 14 of 29 boroughs and census areas. Fishing and tourism drove the lowest rates around the state, with Aleutians East and Aleutians West at 2.7 percent and 3.8 percent respectively and Skagway and Denali Borough at 3.5 percent and 4.1 percent. Kusilvak Census Area continued to have the highest rate at 23.7 percent.

###

# Unemployment Rates, Alaska and U.S.

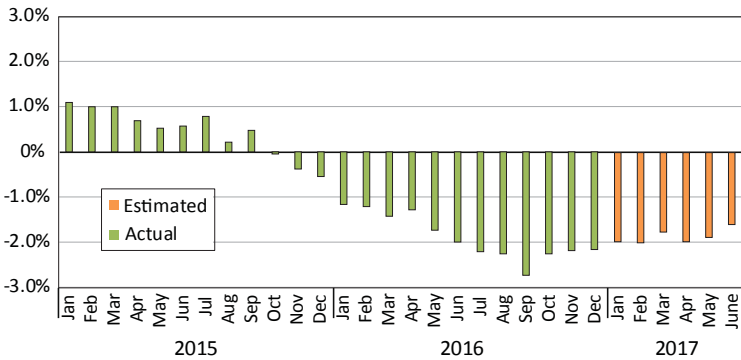
January 2005 to June 2017



Sources: Alaska Department of Labor and Workforce Development, Research and Analysis Section; and U.S. Bureau of Labor Statistics

# Wage and Salary Employment

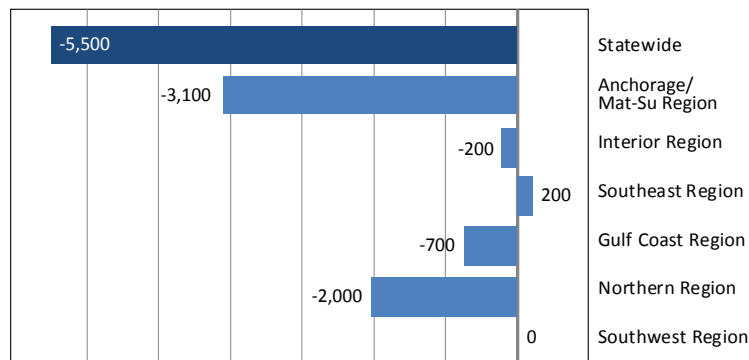
Percent change from same month the previous year



Note: Actual employment counts for 2016 are from the benchmarked Current Employment Statistics and Quarterly Census of Employment and Wages employment series. Estimated employment counts from 2017 are based on a forecast of the QCEW series.

# Regional Employment

Change from June 2016 to June 2017



Source: Alaska Department of Labor and Workforce Development, Research and Analysis Section

# Area Unemployment Rates

Not seasonally adjusted<sup>1</sup>

	Rate		
	6/17 <sup>P</sup>	5/17	6/16
<b>Alaska</b>	<b>7.0</b>	<b>6.8</b>	<b>6.8</b>
<b>Anchorage/Mat-Su Region</b>	<b>6.5</b>	<b>6.3</b>	<b>6.2</b>
Anchorage, Municipality	5.9	5.7	5.6
Matanuska-Susitna Borough	8.6	8.2	8.3
<b>Gulf Coast Region</b>	<b>7.0</b>	<b>7.2</b>	<b>7.1</b>
Kenai Peninsula Borough	7.6	7.7	7.7
Kodiak Island Borough	5.3	4.9	5.3
Valdez-Cordova Census Area	6.0	7.0	6.3
<b>Interior Region</b>	<b>6.9</b>	<b>6.7</b>	<b>6.5</b>
Denali Borough	4.1	6.1	3.8
Fairbanks North Star Borough	6.3	6.0	5.7
Southeast Fairbanks Census Area	8.8	8.9	9.7
Yukon-Koyukuk Census Area	17.5	16.9	18.6
<b>Northern Region</b>	<b>14.0</b>	<b>12.9</b>	<b>12.9</b>
Nome Census Area	15.0	13.8	14.8
North Slope Borough	8.5	7.5	7.7
Northwest Arctic Borough	19.5	18.8	16.9
<b>Southeast Region</b>	<b>5.6</b>	<b>5.4</b>	<b>5.5</b>
Haines Borough	6.6	7.3	7.6
Hoonah-Angoon Census Area	8.2	10.0	8.3
Juneau, City and Borough	4.5	4.1	4.4
Ketchikan Gateway Borough	5.4	5.7	5.4
Petersburg Borough	8.2	8.3	8.2
Prince of Wales-Hyder CA	10.3	10.0	10.5
Sitka, City and Borough	4.6	4.3	4.3
Skagway, Municipality	3.5	4.0	3.8
Wrangell, City and Borough	6.9	6.4	6.9
Yakutat, City and Borough	8.3	7.0	6.8
<b>Southwest Region</b>	<b>11.4</b>	<b>12.6</b>	<b>11.8</b>
Aleutians East Borough	2.7	5.0	3.0
Aleutians West Census Area	3.8	5.8	3.5
Bethel Census Area	15.9	14.9	15.9
Bristol Bay Borough	4.4	5.3	4.9
Dillingham Census Area	7.8	10.2	9.0
Kusilvak Census Area	23.7	21.0	24.7
Lake and Peninsula Borough	11.5	12.0	13.0

P = Preliminary. As more information becomes available, data are revised every month for the previous month and again at the end of every calendar year.

Note: The official definition of unemployment excludes anyone who has not made an active attempt to find work in the four-week period up to and including the week that includes the 12th of the reference month.

<sup>1</sup>Unemployment rates that are not seasonally adjusted should not be compared with those that are.

Source: Alaska Department of Labor and Workforce Development, Research and Analysis Section; and U.S. Bureau of Labor Statistics

# Employment By Industry

	Average Monthly Employment			Compared to June 2016	
	June 2017 <sup>1</sup>	May 2017 <sup>1</sup>	June 2016 <sup>2</sup>	Change	Percent
<b>Total Nonfarm Employment</b>	<b>343,600</b>	<b>333,000</b>	<b>349,100</b>	<b>-5,500</b>	<b>-1.6%</b>
<b>Total Private</b>	<b>262,600</b>	<b>250,700</b>	<b>267,400</b>	<b>-4,800</b>	<b>-1.8%</b>
Mining and Logging	12,900	13,000	14,500	-1,600	-11.0%
Oil and Gas	9,800	9,900	11,100	-1,300	-11.7%
Construction	17,200	15,800	18,600	-1,400	-7.5%
Manufacturing	16,000	10,200	16,300	-300	-1.8%
Trade, Transportation, and Utilities	67,900	66,500	68,800	-900	-1.3%
Wholesale	6,300	6,200	6,500	-200	-3.1%
Retail	37,800	37,200	38,300	-500	-1.3%
Transportation, Warehousing, and Utilities	23,800	23,600	24,000	-200	-0.8%
Information	6,100	6,100	6,400	-300	-4.7%
Financial Activities	12,300	12,200	12,400	-100	-0.8%
Professional and Business Services	28,900	28,200	29,700	-800	-2.7%
Education and Health	49,000	49,000	48,100	900	1.9%
Health Care	36,200	37,000	35,300	900	2.5%
Leisure and Hospitality	41,500	38,000	41,400	100	0.2%
Other Services	10,800	10,800	11,200	-400	-3.6%
<b>Total Government</b>	<b>81,000</b>	<b>82,800</b>	<b>81,700</b>	<b>-700</b>	<b>-0.9%</b>
Federal <sup>3</sup>	15,900	15,500	15,800	100	0.6%
State <sup>4</sup>	22,500	23,800	24,000	-1,500	-6.3%
Local <sup>5</sup>	42,600	43,500	41,900	700	1.7%

<sup>1</sup>Employment estimates for 2017 are based on a forecast of Quarterly Census of Employment and Wages (QCEW) data.

<sup>2</sup>Employment estimates for 2016 are from the benchmarked Current Employment Statistics employment data.

<sup>3</sup>Excludes uniformed military

<sup>4</sup>Includes the University of Alaska

<sup>5</sup>Includes public schools and tribal government