

Heidi Drygas
Commissioner

www.labor.alaska.gov



P.O. Box 111149
Juneau, AK 99811-1149
907.465.2700
commissioner.labor@alaska.gov

Press Release

COMMISSIONER'S OFFICE

FOR IMMEDIATE RELEASE
August 18, 2017

No. 17-33

For more information: **Karinne Wiebold, Economist**
907-465-6039, Karinne.Wiebold@Alaska.Gov

Unemployment Rate at 7.0 Percent in July

JUNEAU, Alaska—Alaska's seasonally adjusted unemployment rate was 7.0 percent in July, up two-tenths of a percentage point from June. The rate is up half a percentage point from the beginning of the year. The comparable national rate for July was 4.3 percent.

July employment was down by an estimated 7,500 jobs from July 2016, or 2.1 percent. Preliminary estimates show job losses spread across most industries, although the deepest losses remain concentrated in industries closely tied to oil and gas.

Oil and gas led job losses (-1,500), followed by construction (-1,200), professional and business services (-1,000) and state government (-1,000). Local and federal government and health care were the only industries to gain jobs over the year. Local government includes public schools and tribal government.

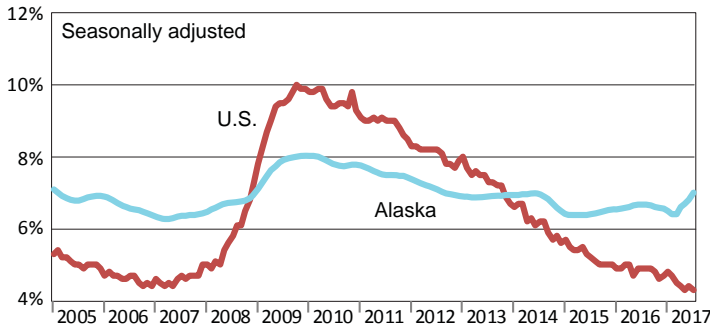
July's not-seasonally adjusted unemployment rate was 6.6 percent, down four-tenths of a percentage point from June, a slightly smaller-than-usual July decline. July and August are the peak months for seasonal employment in seafood processing, construction, and leisure and hospitality.

Across the state, unemployment rates fell in 25 of 29 boroughs and census areas. Fishing and tourism drove the lowest rates in Bristol Bay (1.6 percent), Aleutians East and West (1.9 percent and 2.8 percent, respectively) and Skagway (3.0 percent). Kusilvak Census Area continued to have the highest rate at 24.5 percent.

###

Unemployment Rates, Alaska and U.S.

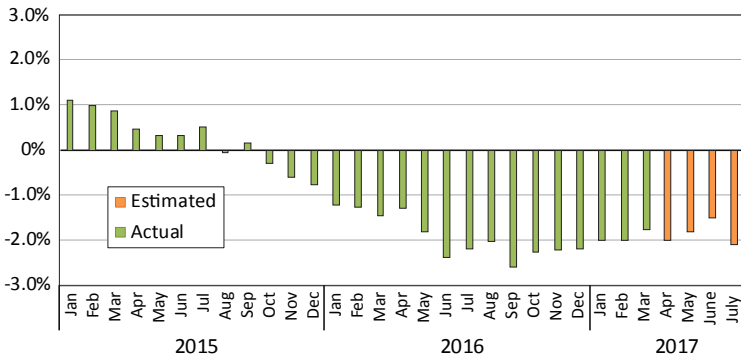
January 2005 to July 2017



Sources: Alaska Department of Labor and Workforce Development, Research and Analysis Section; and U.S. Bureau of Labor Statistics

Wage and Salary Employment

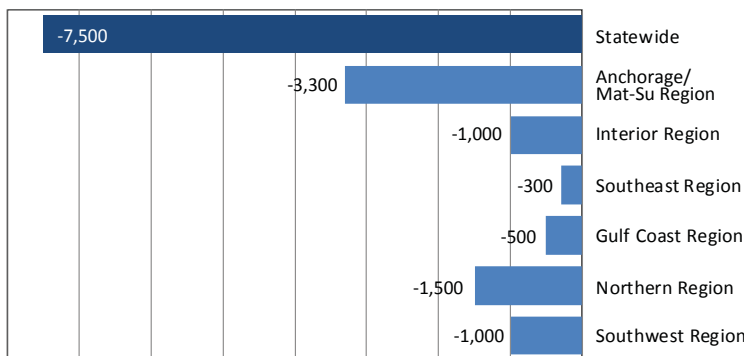
Percent change from same month the previous year



Note: Actual employment counts for 2016 are from the benchmarked Current Employment Statistics and Quarterly Census of Employment and Wages employment series. Estimated employment counts from 2017 are based on a forecast of the QCEW series.

Regional Employment

Change from July 2016 to July 2017



Source: Alaska Department of Labor and Workforce Development, Research and Analysis Section

Area Unemployment Rates

Not seasonally adjusted¹

	Rate		
	7/17 ^P	6/17	7/16
Alaska	6.6	7.0	6.1
Anchorage/Mat-Su Region	6.2	6.5	5.7
Anchorage, Municipality	5.7	5.9	5.1
Matanuska-Susitna Borough	8.1	8.6	7.6
Gulf Coast Region	6.4	7.0	6.2
Kenai Peninsula Borough	7.0	7.5	6.8
Kodiak Island Borough	4.8	5.3	4.7
Valdez-Cordova Census Area	5.2	6.0	5.2
Interior Region	6.4	6.8	5.8
Denali Borough	3.9	4.2	3.3
Fairbanks North Star Borough	5.8	6.2	5.2
Southeast Fairbanks Census Area	8.5	8.8	8.9
Yukon-Koyukuk Census Area	17.6	17.7	16.1
Northern Region	13.5	13.9	12.0
Nome Census Area	15.0	14.9	14.2
North Slope Borough	8.1	8.4	7.2
Northwest Arctic Borough	18.4	19.3	15.4
Southeast Region	5.1	5.6	4.7
Haines Borough	5.8	6.6	6.1
Hoonah-Angoon Census Area	7.5	8.1	7.4
Juneau, City and Borough	4.5	4.5	3.8
Ketchikan Gateway Borough	4.9	5.5	4.6
Petersburg Borough	7.1	8.3	6.1
Prince of Wales-Hyder CA	9.6	10.4	9.7
Sitka, City and Borough	4.0	4.6	3.5
Skagway, Municipality	3.0	3.5	3.2
Wrangell, City and Borough	5.9	7.0	5.5
Yakutat, City and Borough	7.4	8.4	6.8
Southwest Region	10.1	11.4	9.4
Aleutians East Borough	1.9	2.6	1.9
Aleutians West Census Area	2.8	3.8	2.5
Bethel Census Area	15.4	15.8	14.3
Bristol Bay Borough	1.6	4.4	1.7
Dillingham Census Area	7.9	7.8	7.8
Kusilvak Census Area	24.5	23.6	24.0
Lake and Peninsula Borough	11.4	11.5	9.4

P = Preliminary. As more information becomes available, data are revised every month for the previous month and again at the end of every calendar year.

Note: The official definition of unemployment excludes anyone who has not made an active attempt to find work in the four-week period up to and including the week that includes the 12th of the reference month.

¹Unemployment rates that are not seasonally adjusted should not be compared with those that are.

Source: Alaska Department of Labor and Workforce Development, Research and Analysis Section; and U.S. Bureau of Labor Statistics

Employment By Industry

	Average Monthly Employment			Compared to July 2016	
	July 2017 ¹	June 2017 ¹	July 2016 ²	Change	Percent
Total Nonfarm Employment	348,900	344,000	356,400	-7,500	-2.1%
Total Private	273,100	262,100	280,300	-7,200	-2.6%
Mining and Logging	12,800	12,900	14,300	-1,500	-10.5%
Oil and Gas	9,400	9,500	10,900	-1,500	-13.8%
Construction	18,200	17,200	19,400	-1,200	-6.2%
Manufacturing	23,500	15,500	24,300	-800	-3.3%
Trade, Transportation, and Utilities	68,600	67,900	70,100	-1,500	-2.1%
Wholesale	6,300	6,200	6,600	-300	-4.5%
Retail	38,000	37,700	38,800	-800	-2.1%
Transportation, Warehousing, and Utilities	24,300	23,900	24,700	-400	-1.6%
Information	6,100	6,100	6,400	-300	-4.7%
Financial Activities	12,600	12,300	12,900	-300	-2.3%
Professional and Business Services	28,600	28,700	29,600	-1,000	-3.4%
Education and Health	49,300	49,200	48,900	400	0.8%
Health Care	36,300	36,200	35,800	500	1.4%
Leisure and Hospitality	42,500	41,500	43,100	-600	-1.4%
Other Services	10,900	10,800	11,300	-400	-3.5%
Total Government	75,800	81,900	76,100	-300	-0.4%
Federal ³	16,000	16,000	15,800	200	1.3%
State ⁴	22,500	23,500	23,500	-1,000	-4.3%
Local ⁵	37,300	42,400	36,800	500	1.4%

¹Employment estimates for 2017 are based on a forecast of Quarterly Census of Employment and Wages (QCEW) data.

²Employment estimates for 2016 are from the benchmarked Current Employment Statistics employment data.

³Excludes uniformed military

⁴Includes the University of Alaska

⁵Includes public schools and tribal government